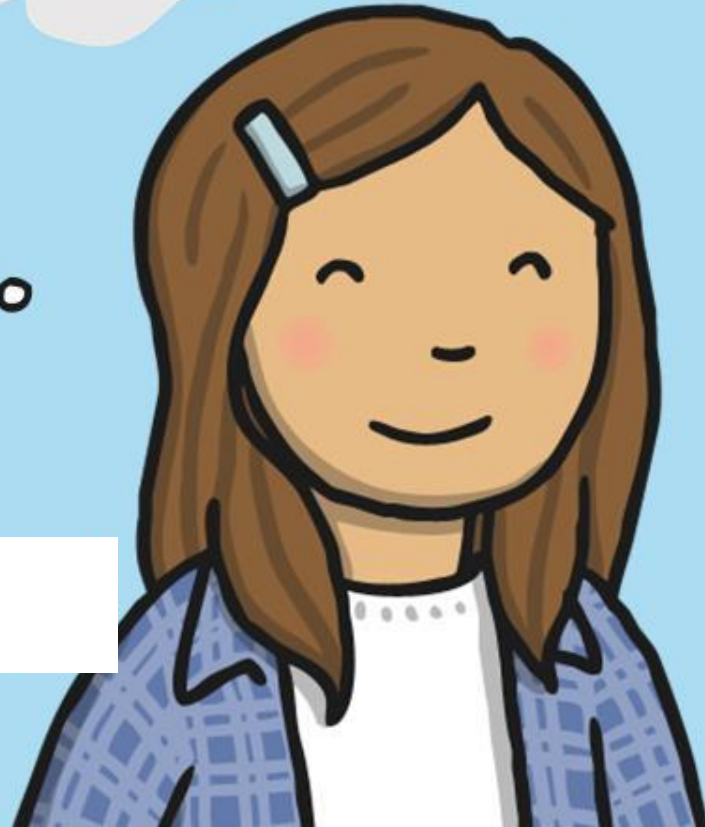


# Fractions

Warm-Up



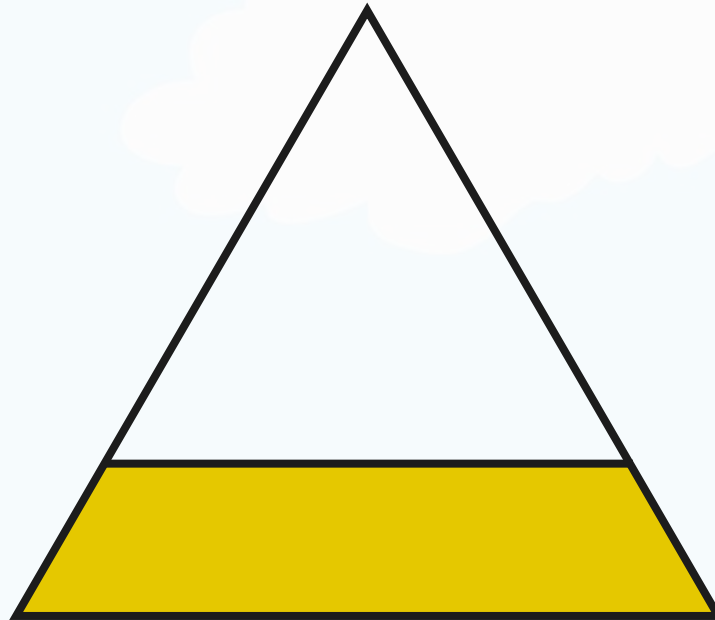
# Is it a half?



answer

Yes, it is a half because it is divided into two equal parts.

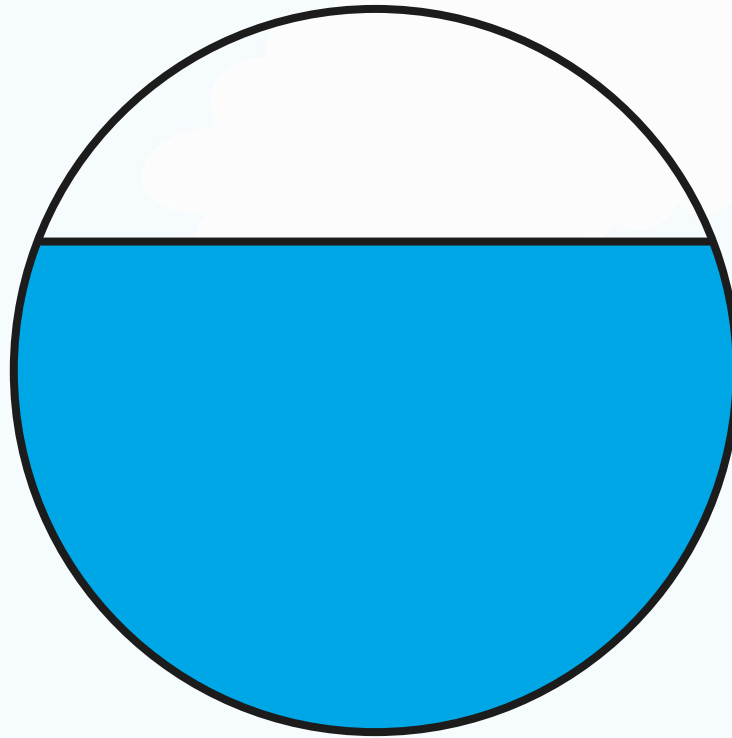
# Is it a half?



answer

No, because the parts are not equal.

# Is it a Half?



answer

No, because the parts are not equal.

Half of the class are girls.  
There are 6 girls.  
How many children are in the class altogether?



answer

12

# Half It!

What is half of this amount?



answer

\$4

# Half It!

What is half of this amount?



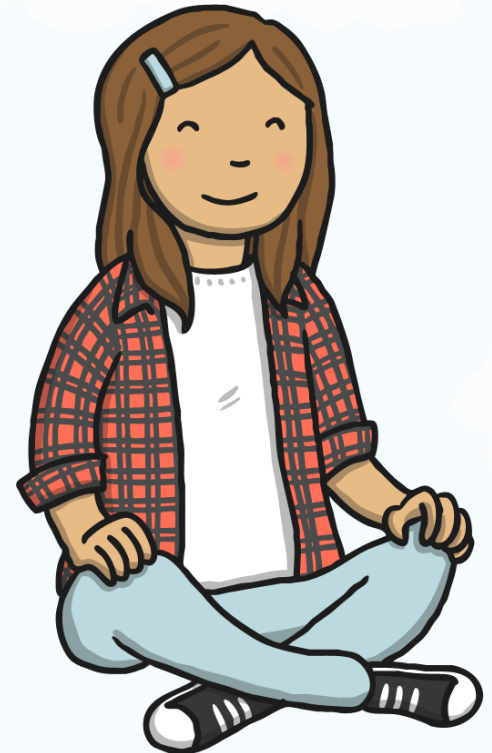
answer

5c

What number is  
half of 10?

5

answer

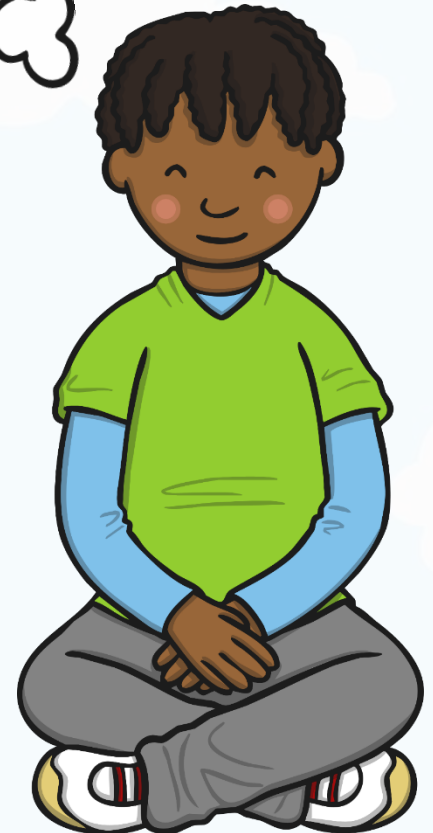




What number is  
half of 12?

6

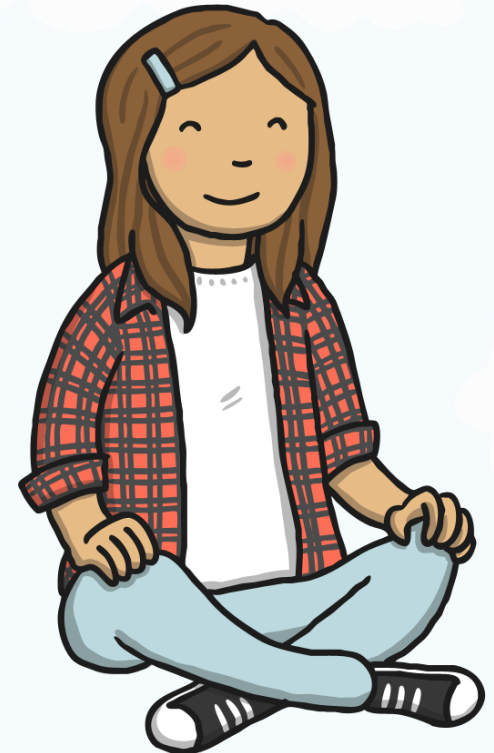
answer



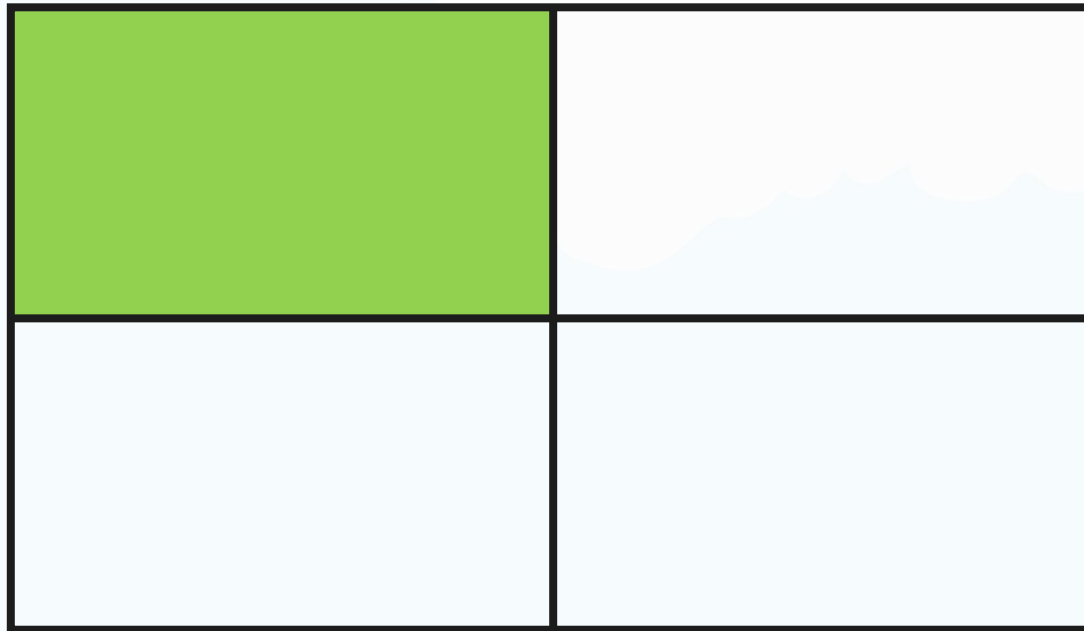
What number is  
half of 20?

10

answer



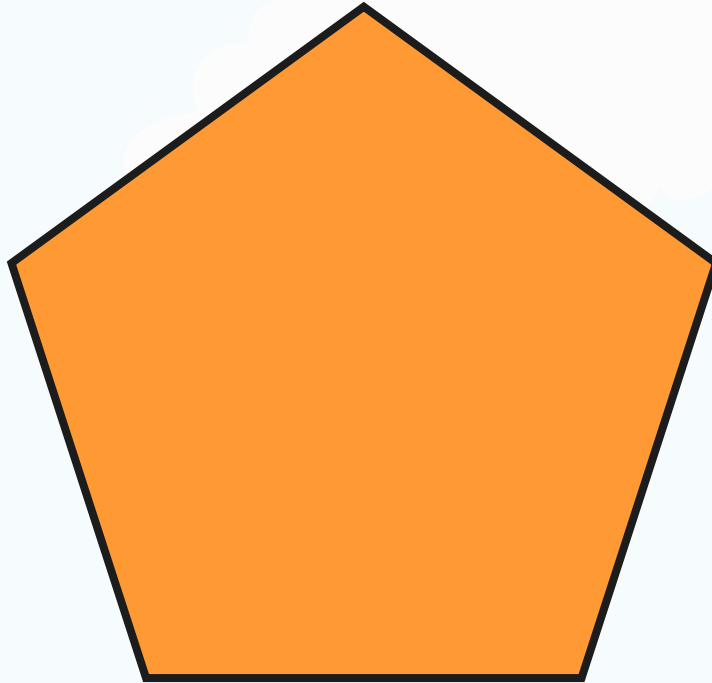
# Is it a quarter?



answer

Yes, because it is divided into four equal parts.

# Is it a quarter?

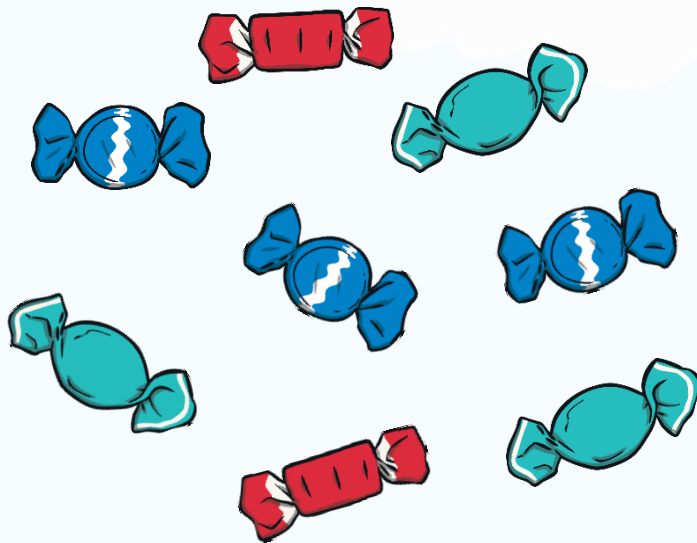


answer

No, because it is not divided into four equal parts.

# Share the Sweets!

Ruby shared 8 lollies into 4 party bags.  
How many lollies were in each party bag?

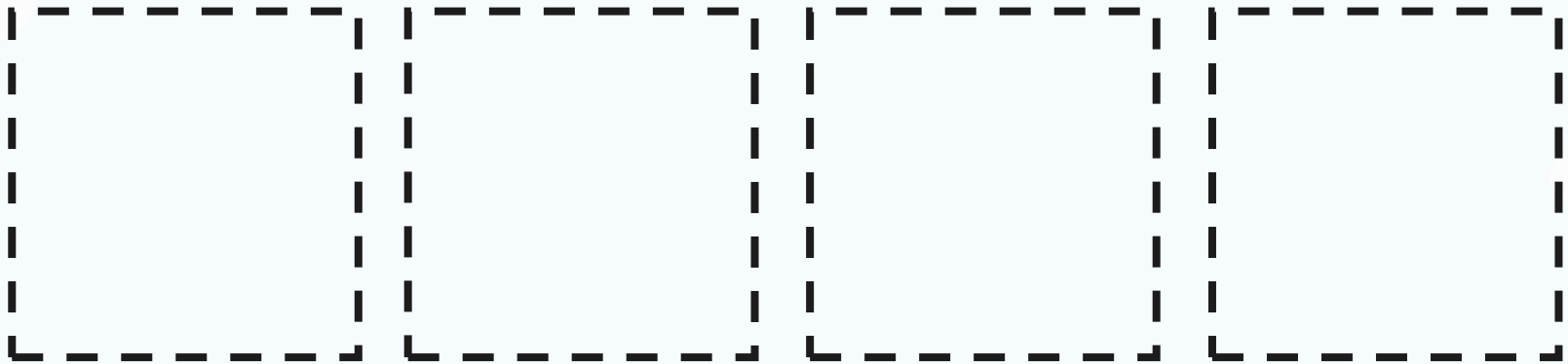
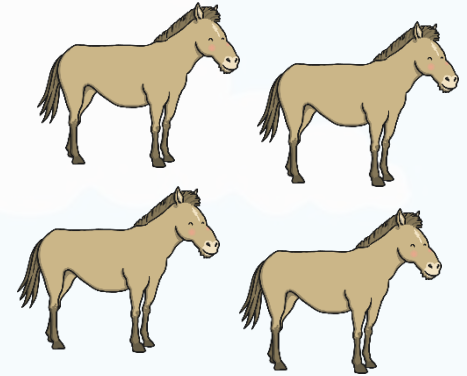
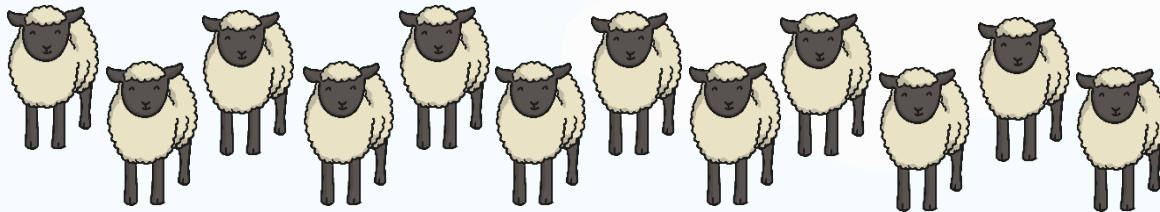


answer

2

# Put the Animals Away!

Share the animals equally into the pens.  
How many animals are in each pen?



answer

3 sheep and 1 horse

